

# ILLuminec Led

Lineaire High Bay T13 voor professioneel gebruik 135lm/W

Voltage AC100-277V 50/60Hz

Led type **PHILIPS 3030**

Driver

**TOMCARLINE**

**Dimbaar 1-10V**



PF >0.95

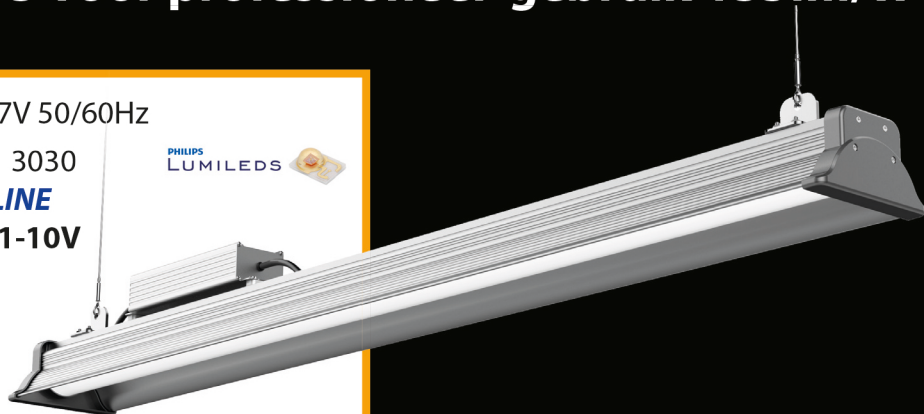
Luminus efficiency 135 lm/W

CCT 5000K

CRI >75

Openingshoek 110°

Optiek Opaal Polycarbonaat



Behuizing Pure aluminium 1070

Levensduur LED L90>46 000 h bij TA <40°

L80>54 000 h bij TA <40°

Garantie 7 jaar

Voor omgevingstemp -30° / + 55°C

Temp tijdens opslag -40° / + 85°C

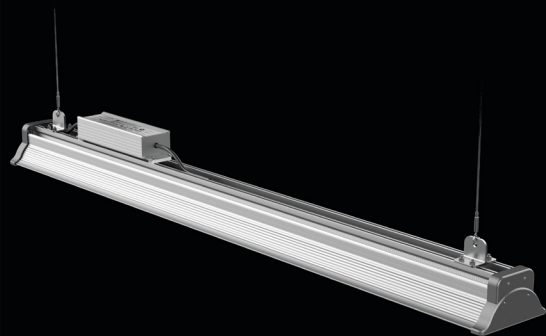
IP waarde IP65

Slagbestendigheid IK08

Certificaten



LAGE VERBLINDINGSFACTOR



## LHB-T13 DIMBAAR 1-10VOLT

ILL-LHB-T13-80W750L110D1	T13B-80W	80Watt	5000K	110°	10 800lm	605x138x122mm
ILL-LHB-T13-100W750L110D1	T13B-100W	100 Watt	5000K	110°	13 500lm	605x138x122mm
ILL-LHB-T13-120W750L110D1	T13B-120W	120 Watt	5000K	110°	16 200lm	905x138x122mm
ILL-LHB-T13-150W750L110D1	T13B-150W	150 Watt	5000K	110°	20 250lm	1205x138x122mm
ILL-LHB-T13-180W750L110D1	T13B-180W	180Watt	5000K	110°	24 300lm	1205x138x122mm
ILL-LHB-T13-200W750L110D1	T13B-200W	200Watt	5000K	110°	27 000lm	1505x138x122mm
ILL-LHB-T13-240W750L110D1	T13B-240W	240Watt	5000K	110°	32 400lm	1505x138x122mm

TEST RAPPORT : <http://www.olino.org/articles/2018/07/17/illuminec-ill-lhb-t13-200w750l110d1/>

Distributed by **Bluelight.be**